



LI PCC EXECUTIVE OFFICERS

FRANK CALABRESE
UNITED STATES POSTAL SERVICE
Postal Co-Chair
frank.calabrese@usps.gov

ADAM AVRICK
DESIGN DISTRIBUTORS, INC.
Industry Co-Chair
adam@designdistributors.com

AMY FESTA-KEALEY
BROADRIDGE FINANCIAL SOLUTIONS, INC.
amy.festa@broadridge.com

ROCCO POZZULO
rpozz@optonline.net

MICHAEL VIGNOLA
CENTURY DIRECT
vignolam@centurydirect.net

LISA BROOKS
BROOKS LITHO & DIGITAL GROUP
lisabrooks@brookslitho.com

KRISTEN HULSER
FLEXIBLE INTERNATIONAL MAIL
khulser@internationalmail.com

TRACY POLTIE
Real Estate Sales at Coldwell Banker
tracy.poltie@cbmoves.com

Executive Officer Meetings:
9:30 am - 10:00 am

All General Meetings:
10:00 am - 11:00 am

Long Island PCC
Mid Island P&DC
160 Duryea Road
Melville NY 11747-3825
(631) 755-2850
www.longislandpcc.com

Long Island Postal and Industry Co-Chair Corner

On February 11th, 12th & 13th the Long Island PCC held our first **WebEx** training for the **Mail Design Professional Certification Program**. This training was set up as 3 half days. The 21 attendees were able to login at their facility or were given the option of attending at our facility. This was a great way to get more attendees certified at a discounted rate. The instructor **Cherlyn Ruggeri**, was live **via WebEx from the NCED / Business Mail Academy in Oklahoma**. The three day class via WebEx was a good choice for the LI PCC and we may use this training method in the future. The class was both informative and educational.



Left to Right: Lori Granholm, BSN Rep, Dina Middleton A/BSN Rep. Bruce Russo, Mailing Standards Specialist and Ryan Tentas A/BSN Rep.

March has come and it is time to spring ahead and turn forward our clocks on March 8th. That same week on **March 11th**, we will be hosting our regular monthly meeting with a presentation on **"How to Manage and Handle Return & Undeliverable Mail."**

Remember..... there is no cost to attend our monthly meetings, however, **"Space is Limited"**, so you will need to pre-register for each event. **REGISTER** online at the LI PCC website at <http://www.LongIslandPCC.com>.

Frank Calabrese
Postal Co-Chair

Adam Avrick
Industry Co-Chair

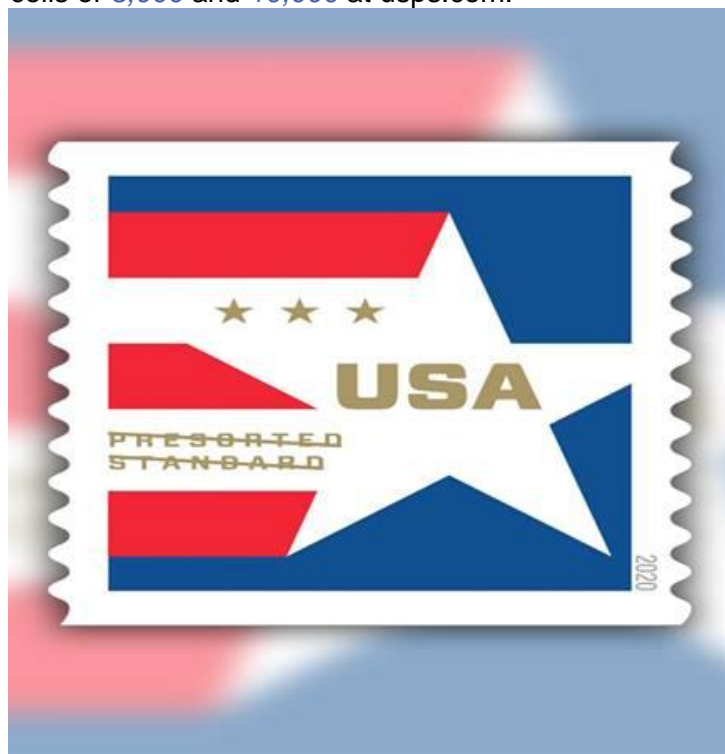
Volume 14, Issue 3
March 2020 - Long Island

LI PCC EXECUTIVE POLICY BOARD MEMBERS

Access Direct Systems Inc
Action Addressing & Mailing Services
Advertising Distributors of America Inc
All Island Media
Bell and Howell
Broadridge Financial Solutions Inc
Brokers Worldwide
Brooks Litho & Digital Group
Canon USA
Century Direct
Coldwell Banker
Command Business Products Inc
D P Murphy
Datumeg Inc
Design Distributors Inc
DiditDM
Dix Hills Water District
Eastern Suffolk BOCES
Flexible International Mail
Fulfillment Plus Inc
Globegistics Inc
Hofstra University
Inner Workings
Lorraine Gregory Corp
Mailtech Mailing Systems Inc
MVS Mailers Inc.
Nassau BOCES
Neopost NY/NJ Metro
Newsday Media Group
NYCB
PCI Group Inc
Pitney Bowes Inc
Pitney Bowes Presort Services
Richner Communications Inc

A *STAR* is BORN

Presorted Star, a stamp intended for business mailers, was released Feb. 3. The stamp features an asymmetrical design that includes one large white star, two white and three red stripes, and a blue background with letters and three small stars in gold. Greg Breeding served as art director and Matthew Pamer designed the stamp, which USPS *announced* late last year. No national dedication ceremony was held. Presorted Star is available coils of *3,000* and *10,000* at usps.com.



DMM REVISION.....

PARCEL RETURN SERVICE

On January 26th the Postal Service has revised Mailing Standards of the United States Postal Service, Domestic Mail Manual (DMM) 505.4.2 to include information about the two options that customers may use to request a change or cancellation of Parcel Return Service retrieval locations.

A customer may change or cancel retrieval locations (delivery units and sectional center facilities) as follows:

Online. A customer may change or cancel retrieval locations online at the USPS Business Customer Gateway (BCG) at <https://gateway.usps.com>.

Letter. A customer may change or cancel retrieval locations by sending a request on company letterhead to the director, Business Acceptance Solutions

Volume 14, Issue 3
March 2020 - Long Island

LI PCC EXECUTIVE POLICY BOARD MEMBERS Cont.

Ricoh InfoPrint Solutions

RISO, INC

Sir Speedy Printing and Marketing Services

Suffolk County Government (DPW)

The CPW Group

Times Review Newspapers

Town of Hempstead

United States Postal Service

Verizon

William Charles Printing Company

YesElections

LI PCC Membership Eligibility

The LI PCC has a three (3) tier membership based on customer participation and involvement with the PCC.

NOTE: The LI PCC does not collect any fees or dues to become any type of member.

General: General membership is open to all business mailers who use the services of the Postal Service.

Executive Policy Board: This group is comprised of individuals from industry and postal employees. This is the planning group of the Council (also referred to as the PCC Board members or Policy Committee members). Members MUST attend a combination of five (5) LI PCC meetings or events per year and must participate in at least one of the Sub-Committees established by the Council.

Executive Officers: LI PCC Executive Officers consist of a Postal Co-Chair, Industry Co-Chair, First Vice-Chairperson, Secretary & Treasurer. Executive Officers are elected to serve for a two (2) year term.

Special discounts and promotions offered to all qualified Executive Policy Board members throughout the year.

A copy of the LI PCC financial report is available for anyone to view if interested.

LONG ISLAND POSTAL CUSTOMER COUNCIL'S

20th ANNUAL GOLF OUTING

Tuesday June 2, 2020

WIND WATCH
GOLF & COUNTRY CLUB
1715 Motor Pkwy
Hauppauge, NY 11788
(631) 232-9850

www.clubcorp.com/Clubs/Wind-Watch-Golf-Country-Club

GOLF & DINNER \$175

EARLY BIRD SPECIAL REGISTER BEFORE MAY 1st 2020

ON COURSE SNACKS & BEVERAGES INCLUDED

DINNER ONLY \$65

**PRIZES GIVEN FOR:
HOLE-IN-ONE**

CLOSEST TO THE LINE—CLOSEST TO THE PIN—LONGEST DRIVE

*12 NOON REGISTRATION
1:30 PM SHOTGUN START*

*12:30 PM - 1:30 PM LUNCH
6:30 PM COCKTAILS & DINNER*

FOR MORE INFORMATION OR TO REGISTER AND PAY ONLINE GO TO:
WWW.LONGISLANDPCC.COM

CALL OUR BSN REPS RYAN TENTAS @631-755-2918 OR LORI GRANHOLM @631-755-2920

2020 NATIONAL POSTAL FORUM – NPF

April 26th-29th 2020 - Registration is Open

INNOVATING THE JOURNEY AT EVERY TOUCHPOINT

NPF NATIONAL POSTAL FORUM

Orlando World Center Marriott
Florida | April 26-29, 2020

All roads to success begin with one step. For shipping and mailing professionals, there's no bigger, better step to take than the one that leads to the NPF.

Online registration is officially open for the National Postal Forum (NPF), taking place in **Orlando, FL, April 26-29, 2020**. To benefit from all available discounts, please reach out to your postal liaisons or your BSN Rep at (631) 755-2920 or email them at BLONG2@usps.gov for discount codes.

HOW TO MANAGE and HANDLE RETURNED & UNDELIVERABLE MAIL

Wednesday March 11, 2020

On Wednesday March 11th the Long Island PCC will be holding its next monthly meeting and presentation. This month's topic will be *How To Manage/Handle Returned & Undeliverable Mail* and our guest speaker is **USPS Address Management Support Analyst, Senior, Kai Fisher**. Learn how your organization can manage this task to ensure that your lists stay updated and current.

Space is Limited

There is no cost to attend but you **MUST** pre-register
Attendees will get **1 Credit** for this session in the
"Address Quality" Track

This event will take place at the
Consumer & Industry Contact / Business Service Network

Mid Island P&DC
160 Duryea Rd – Melville NY 11747-3825

REGISTER NOW! Go to the LI PCC website
<http://www.longislandpcc.com/>

Thanks to our March Breakfast Sponsor

Hofstra University

100 Hofstra University
Hempstead, NY 11549-1000
(516) 463-6600
www.hofstra.edu

"No endorsement by the Postal Service or the PCC is given or implied by this acknowledgement."

Long Island PCC

160 Duryea Road, Melville NY 11747-3825

Phone: 631-755-2907

Fax: 631-755-2905

E-mail: francine.v.segarra@usps.gov

WE'RE ON THE WEB!

www.longislandpcc.com

MEMBERS CORNER:

The LI PCC's Mission is to:

- Foster and maintain a close working relationship between mailers and the United States Postal Service.
- Share information about new and existing Postal Service products, programs, regulations, and procedures.
- Facilitate the interchange of ideas among mailers and Postal Service officials.
- Help members and their organizations grow and develop professionally through focused educational programs.

Please help us by contributing news to Francine Segarra at Francine.v.segarra@usps.gov or Laurel Stengel at Laurel.A.Stengel@usps.gov

Newsletter Printing Mailing Donated by - Broadridge Financial Solution

UPCOMING 2020 CALENDAR OF EVENTS

March 11, 2020

Monthly Meeting & Presentation – *How to Manage and Handle Returned & Undeliverable Mail*
10am – 11am
Business Service Network, 160 Duryea Rd - Melville NY
No Charge - Register at www.longislandpcc.com

April 15, 2020

Monthly Meeting & Presentation – "Ask the Expert" on Direct Mail (Domestic & International)
10am – 11am
Business Service Network, 160 Duryea Rd - Melville NY
No Charge - Register at www.longislandpcc.com

May 13, 2020

Monthly Meeting & Presentation - DIM Weight & Parcels
10am – 11am
Business Service Network, 160 Duryea Rd - Melville NY
No Charge - Register at www.longislandpcc.com

June 2, 2020

LI PCC 20th Annual Golf Outing
Wind Watch Golf & Country Club – Hauppauge NY
More Information to follow

WE WANT TO HEAR FROM YOU

Let us know what presentations AND events you want:

Call Francine Segarra at (631) 755-2907 or
Visit www.longislandpcc.com

